



Chip Common Mode Filter (MCA3216B Series) Engineering Specification

■ PRODUCT DETAIL

Part No.	Imp. Com. (Ω) \pm 25% @100MHz	DCR Max. (Ω)	Rated Current Max.(mA)	Rated Voltage (V)	Withstand Voltage (V)	Insulation Resistance Min.(M Ω)
MCA3216B900GB_	90	0.40	400	10	25	200
MCA3216B121FB_	120	0.40	300	10	25	200
MCA3216B181FB_	180	0.50	300	10	25	200
MCA3216B221FB_	220	0.50	300	10	25	200
Test Instruments	<ul style="list-style-type: none"> •HP4291B RF IMPEDANCE / MATERIAL ANALYZER •HP4338A/B MILLIOHMMETER •Agilent 8720ES S-PARAMETER NETWORK ANALYZER •HP6632B SYSTEM DC POWER SUPPLY •Keithley 2410 1100V SOURCE METER 					

** For special part number which is not shown in the above table, please refer to appendix.

■ PART NUMBER CODE

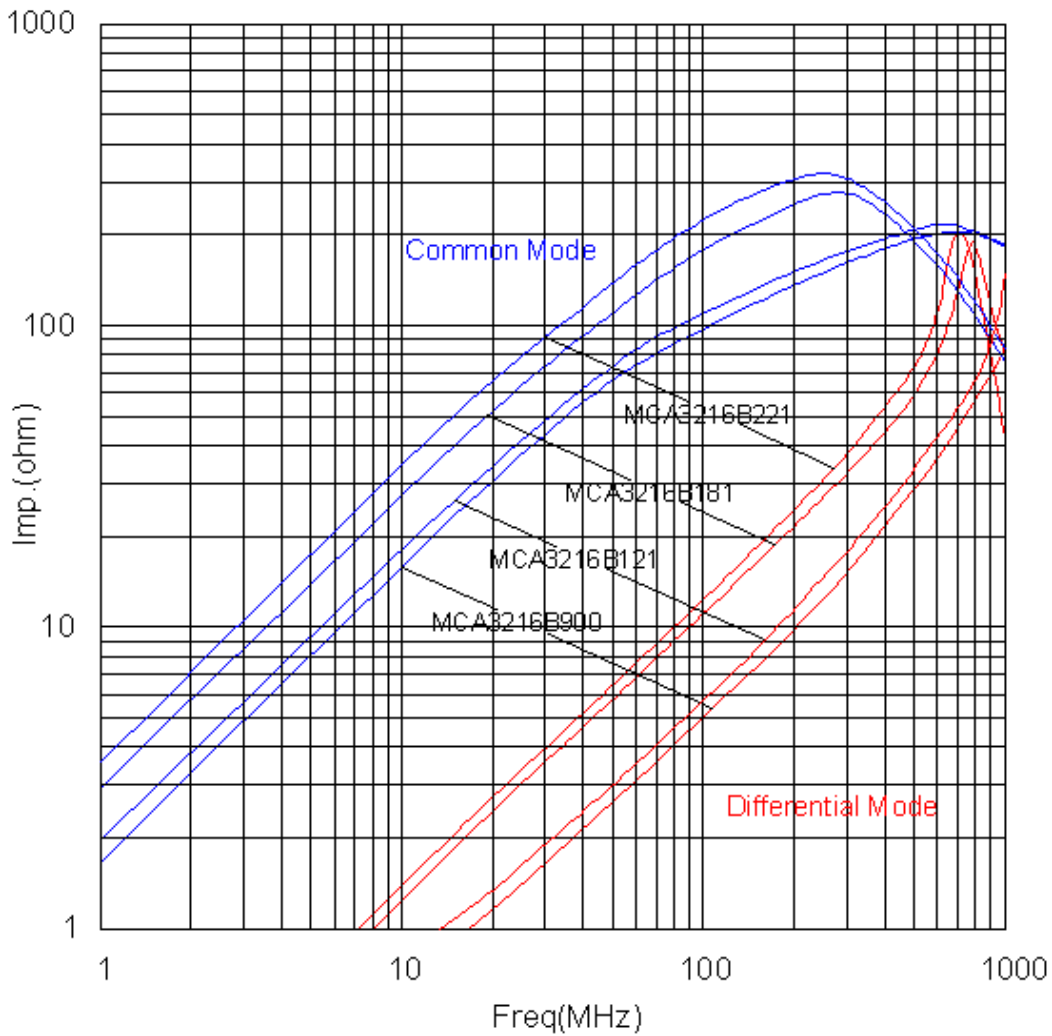
MCA 3216 B 90 0 G B E
1 2 3 4 5 6 7 8

- Series Name
- Size Code: the first two digitals : length(mm), the last two digitals : width(mm)
- Material Code
- Impedance(Ω) \pm 25% (ex : 900=90 Ω ; 121=120 Ω)
- Fixed Decimal Point

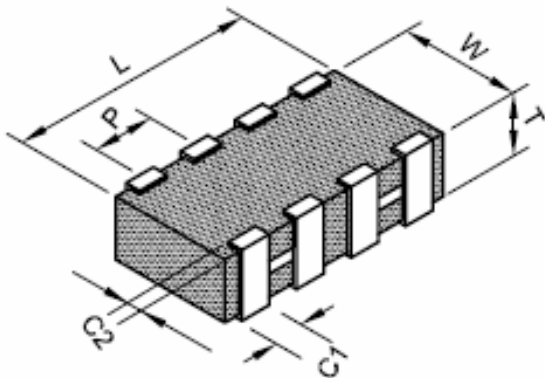
6 Rated Current Code	A=50mA	B=80mA	C=100mA	D=150mA	E=200mA	F=300mA
	G=400mA	H=500mA	I=600mA	J=700mA	K=800mA	

- Soldering : Green Parts: A— Soldering Lead-Free B— Lead-Free for whole chip
- Packaging: E - Embossed plastic tape, 7" reel.

■ IMPEDANCE vs. FREQUENCY CHARACTERISTICS



■ SHAPES AND DIMENSIONS

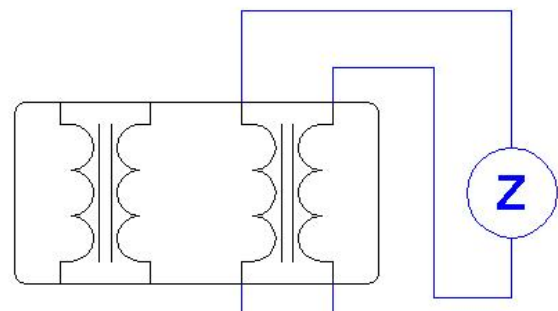
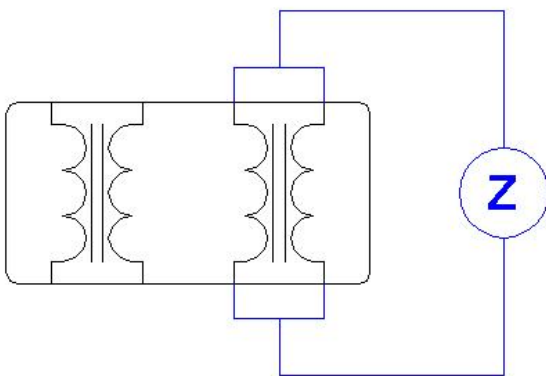


TYPE	3216
L	3.20±0.20
W	1.60±0.20
T	1.00±0.10
P	0.80±0.10
C1	0.45±0.15
C2	0.30±0.20
Unit: mm	

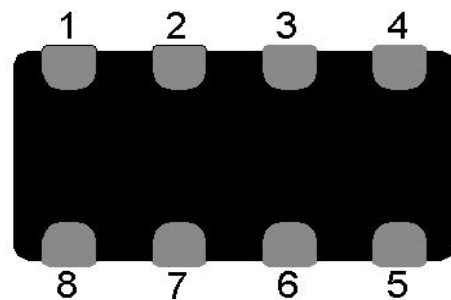
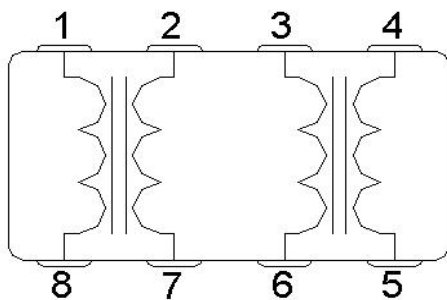
■ MEASURING CIRCUITS

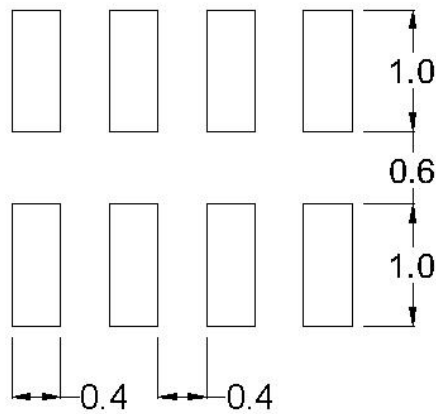
(A):Common mode

(B):Differential mode

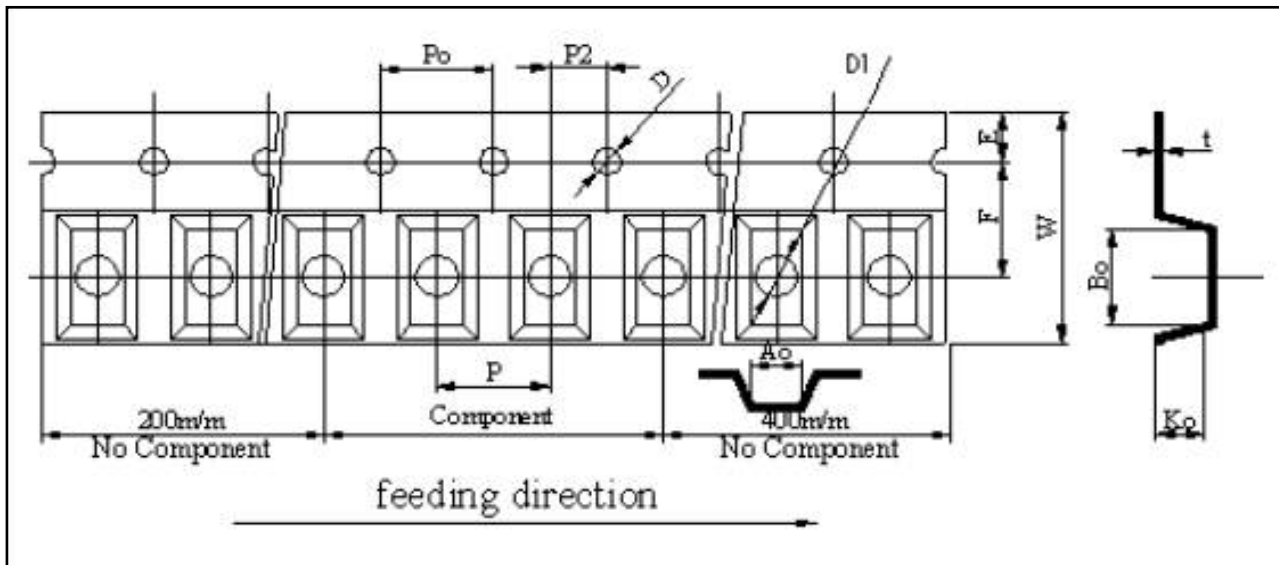


■ CIRCUIT CONFIGURATION & LAYOUT PAD





■ TAPE AND REEL SPECIFICATIONS
PLASTIC CARRIER



■ TAPING DIMENSIONS

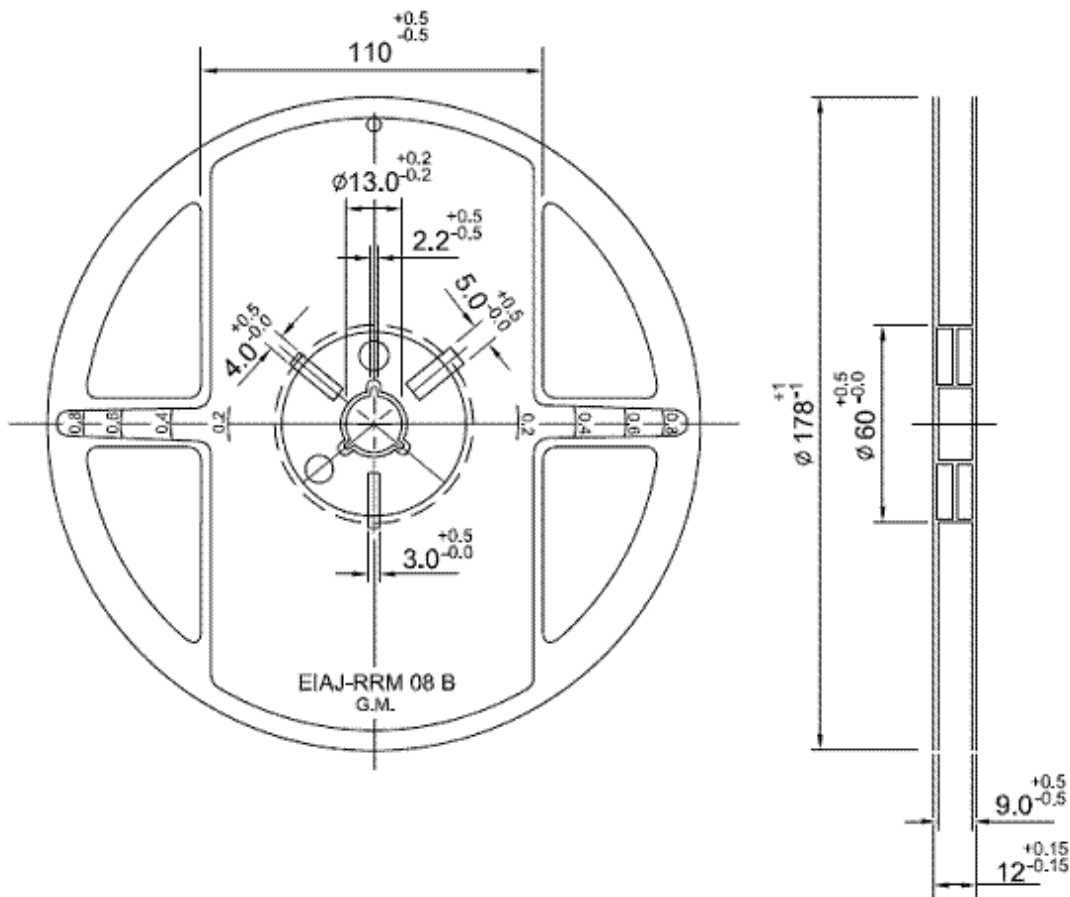
Unit: mm

Symbol	Size	Symbol	Size
W	7.90~8.30	P_o	4.00 ± 0.10
P	4.00 ± 0.10	P_2	2.00 ± 0.05
E	1.75 ± 0.10	A_o	1.85 ± 0.10

F	3.50 ±0.05	Bo	3.43 ±0.10
D	1.55 ±0.05	Ko (T)	1.22 ±0.10
D1	0.95~1.20	t	0.25 ±0.10

■ REEL DIMENSIONS

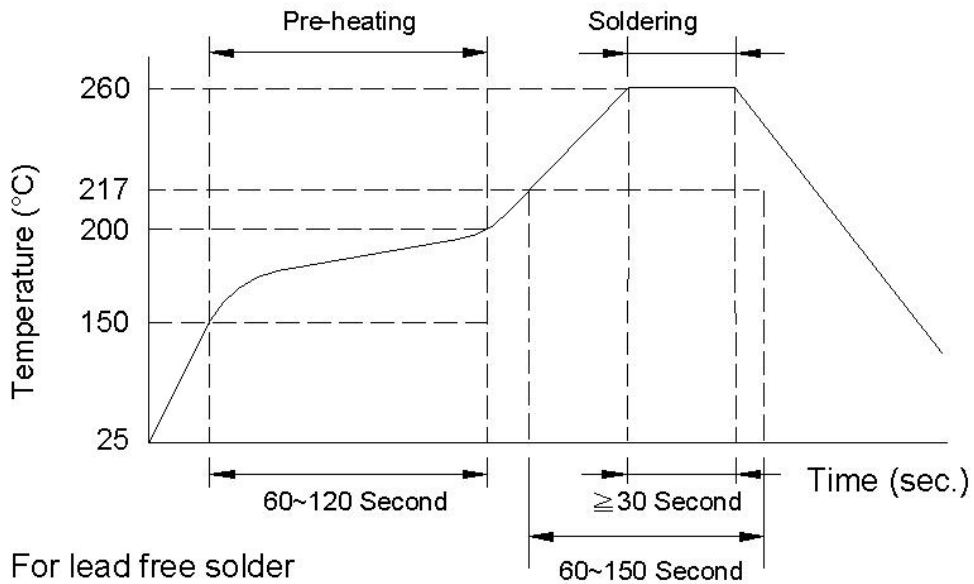
Unit: mm



■ STANDARD QUANTITY FOR PACKAGING

PART SIZE (EIA SIZE)	Reel backagging quantity	Inner box
3216 (1206)	3000 pcs/reel	5 reel/inner box

■ RECOMMENDED SOLDERING CONDITIONS



■ RELIABILITY AND TEST CONDITION

Test item	Test condition	Criteria
Temperature Cycle	A. Temperature : -40 ~ +85°C B. Cycle : 100 cycles C. Dwell time : 30minutes Measurement : at ambient temperature 24 hrs after test completion	A. No mechanical damage B. Impedance value should be within $\pm 20\%$ of the initial value

Operational Life	A. Temperature : 85°C ± 5°C B. Test time : 1000 hrs C. Apply current : full rated current Measurement : at ambient temperature 24 hrs after test completion	A. No mechanical damage B. Impedance value should be within ± 20 % of the initial value
Biased Humidity	A. Temperature : 40 ± 2°C B. Humidity : 90 ~ 95 % RH C. Test time : 1000 hrs D. Apply current : full rated current Measurement : at ambient temperature 24 hrs after test completion	A. No mechanical damage B. Impedance value should be within ± 20 % of the initial value
Test item	Test condition	Criteria
Resistance to Solder Heat	A. Solder temperature : 260 ± 5°C B. Flux : Rosin C. DIP time : 10 ± 1 sec	A. More than 95 % of terminal electrode should be covered with new solder B. No mechanical damage C. Impedance value should be within ± 20 % of the initial value
Steam Aging Test	A. Temperature : 93 ± 2°C B. Test time : 4 hrs(MCA) Others : 8 hrs C. Solder temperature : 235 ± 5°C D. Flux : Rosin E. DIP time : 5 ± 1 sec	More than 95 % of terminal electrode should be covered with new solder

■ **GENERAL TECHNICAL DATA**

Operating temperature range : - 40°C ~ +85°C

Storage Condition : Less than 40°C and 70% RH

Storage Time: 6 months Max.

Soldering method: Reflow or Wave Soldering