



MLF0603 Series Engineering Specification

1. Scope

- (1) Lead free type
- (2) SMD type zinc oxide based ceramic chip
- (3) Insulator over coat keeps excellent low and stable leakage current
- (4) Plating termination provided good solder-ability characteristic
- (5) Wide operating voltage range
- (6) Quick response time (<1ns)
- (7) Low clamping voltage
- (8) Meet IEC 61000-4-2 standard
- (9) Low capacitance can meet high speed single transient voltage protection

Applications

Applications for I/O Port such as RS232, USB, PS2, VGA, Audio on Mother Board and Notebook, Set-Top Box, MP3 Players, DVD Players, and Docking System etc.

Low Capacitance Product Applications for High Speed I/O port such as HDMI, DVI, USB, and IEEE1394 etc.

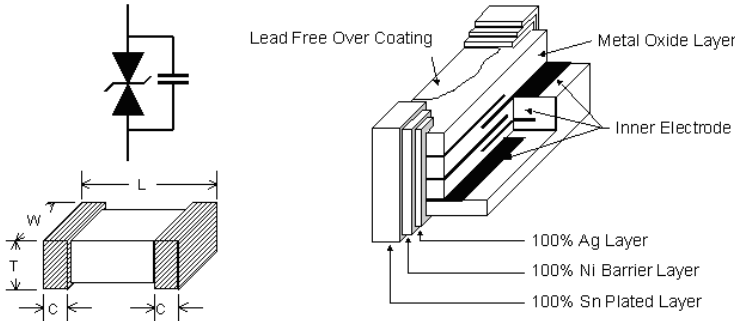
2.Explanation of Part Number

<u>ML</u>	<u>F</u>	<u>0603</u>	<u>100</u>	<u>V05</u>	—	—	—
(1)	(2)	(3)	(4)	(5)	(6)	(7)	(8)

- (1) Series Type : ML — Multilayer Varistor
- (2) Model Code
- (3) Chip Size (EIA) : 0603
- (4) Capacitance: Value-XXR=0.XpF, Ex:0R5=0.5pF; XXx10^N→XXN Ex: 10pF=10x10⁰→100
- (5) Working Voltage : V_{DC}
- (6) Special Code
- (7) Special Code
- (8) Special Code

3 Construction & Dimension

Unit: mm



Size EIA (EIAJ)	0603 (1608)
L	1.60 ± 0.20
W	0.80 ± 0.15
T	0.80 ± 0.1
C	0.40 ± 0.20

4 Part characteristics:

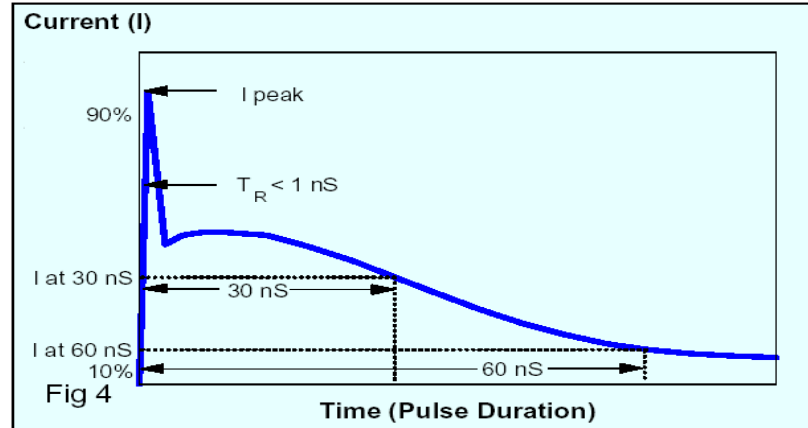
4.1 General Characteristics

PART NUMBER	Working	Clamping	Breakdown		Leakage Current		Capacitance				Peak
	Voltage	Voltage	Voltage		R.T.(15~35°C)		@ 1 V(rms)				Current
	D.C	8/20µs	DC @1mA		Voltage	Current	1MHZ		1KHZ		8/20µs
	(V)	(V)	(V)		(V)	(uA)	(pF)		(pF)		(A)
	max	max	min	max			min	max	min	max	max
MLF06033R0V18	18	130	50	80	3	0.3	2.4	5.4	4	9	2
MLF06035R0V09	9	36	18	24	3	3	2.09	8.8	6.12	11.7	3
MLF0603100V18	18	66	24	32	3	0.3	2.28	9.6	6.8	13	5
MLF0603150V18	18	66	24	32	3	0.3	3.8	16	10.2	19.5	3
MLF0603241V22	22	56	24.3	29.7	3	0.3	54.7	230.4	163.2	312	20
MLF0603301V05	5.5	18	7.2	10.8	3	3	68.4	288	204	390	30
MLF0603301V18	18	56	21.6	26.4	3	0.3	68.4	288	204	390	20
MLF0603471V05	5.5	20	10	14	3	3	106.4	448	319.6	611	30
MLF0603901V05	5.5	18	7.2	10.8	3	3	205.2	864	612	1170	30

ESD Test

- Standard IEC 61000-4-2

- ESD discharge circuit according to IEC 61000-4-2 (up to 8KV ESD direct contact)



5 General Electrical Specifications

5.1 General Technical Data

Operating temperature	-40°C ~ +85°C
Storage temperature (on board)	-40°C ~ +85°C
Response time	<1 ns
Solderability	245±5°C, 3±1sec
Solder leach resistance	260±5°C, 10±1sec

5.2 Environmental Performance

Characteristics	Specifications	Test condition
Bias humidity	$\Delta V_V / V_V \leq \pm 10\%$	90%RH, 40°C, Working voltage, 1000 hours
Thermal shock	$\Delta V_V / V_V \leq \pm 10\%$	-40°C to 85°C, 30 min. Cycle, 5 cycles
Full load voltage	$\Delta V_V / V_V \leq \pm 10\%$	Working voltage, 85°C, 1000 hours

5.3 Storage Condition with Package

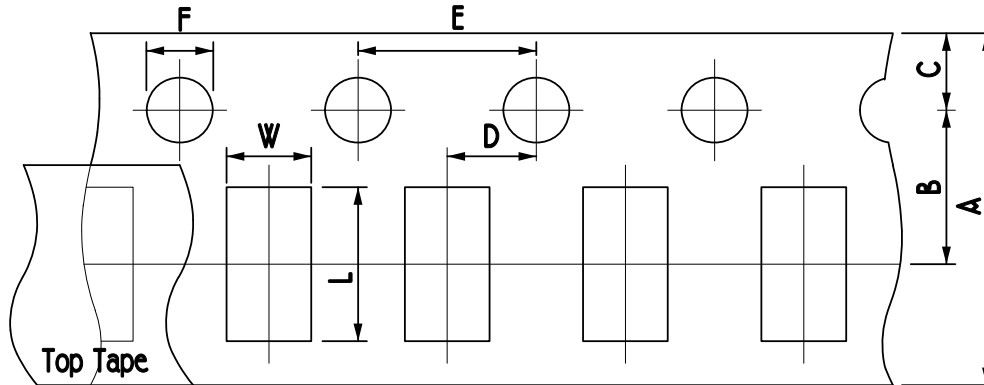
Storage Time: 12 months max.

Storage Temperature: 5°C to 40°C

Relative Humidity: 65%

6. Taping Package and Label Marking

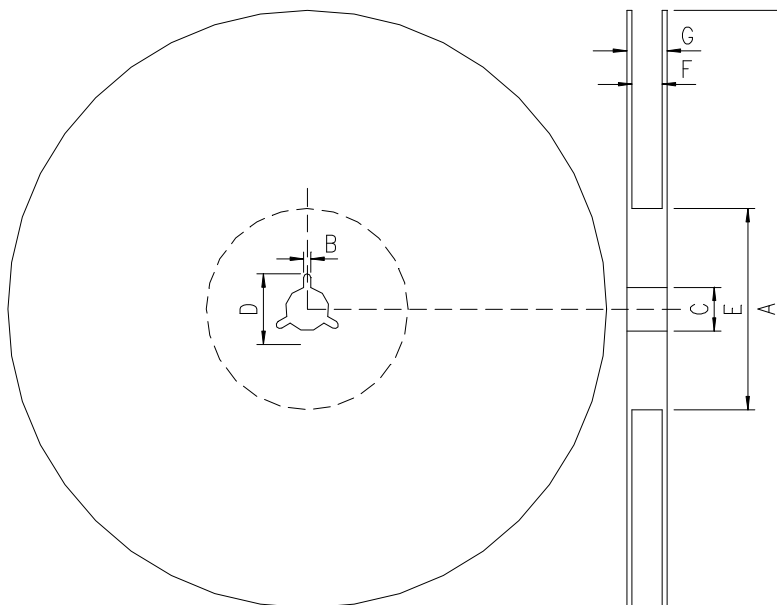
6.1 Carrier Tape Dimensions



UNIT: mm

Type	A	B	C	D	E	F	L	W
0603	8.00 ±0.20	3.50 ±0.05	1.70 ±0.05	2.00 ±0.05	4.00 ±0.05	1.50 ±0.10	1.78 ±0.05	0.95 ±0.05

6.2 Taping Reel Dimensions



A	178.0±1.0
B	2.0±0.5
C	13.0±0.5
D	21.0±0.8
E	60.0±1.0
F	9.0±0.2
G	13.5±1

6.3 Taping Specifications

There shall be the portion having no product in both the head and the end of taping, and there shall be the cover tape in the head of taping.

6.4 Label Marking

The label specified as follows shall be put on the side of reel.

- (1) Part No.
- (2) Quantity
- (3) Lot No.

* Part No. And Quantity shall be marked on outer packaging.

6.5 Quantity of Products in the Taping Package

- (1) Standard quantity : 4,000pcs/Reel for MLF 0603 Series
- (2) Shipping quantity is a multiple of standard quantity.

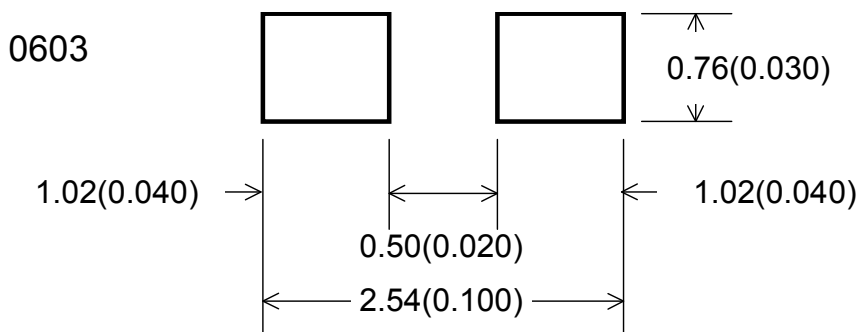
7. Precautions for Handling

7.1 Solder Cream in Reflow Soldering

Refer to the recommendable land pattern as printing mask pattern for solder cream.

- (1) Print solder in a thickness of 150 to 200 μm .

Dimensions: millimeters (inches)



7.2 Precaution for Handling of Substrate

Do not exceed to bend the board after soldering this product extremely.

(Reference examples)

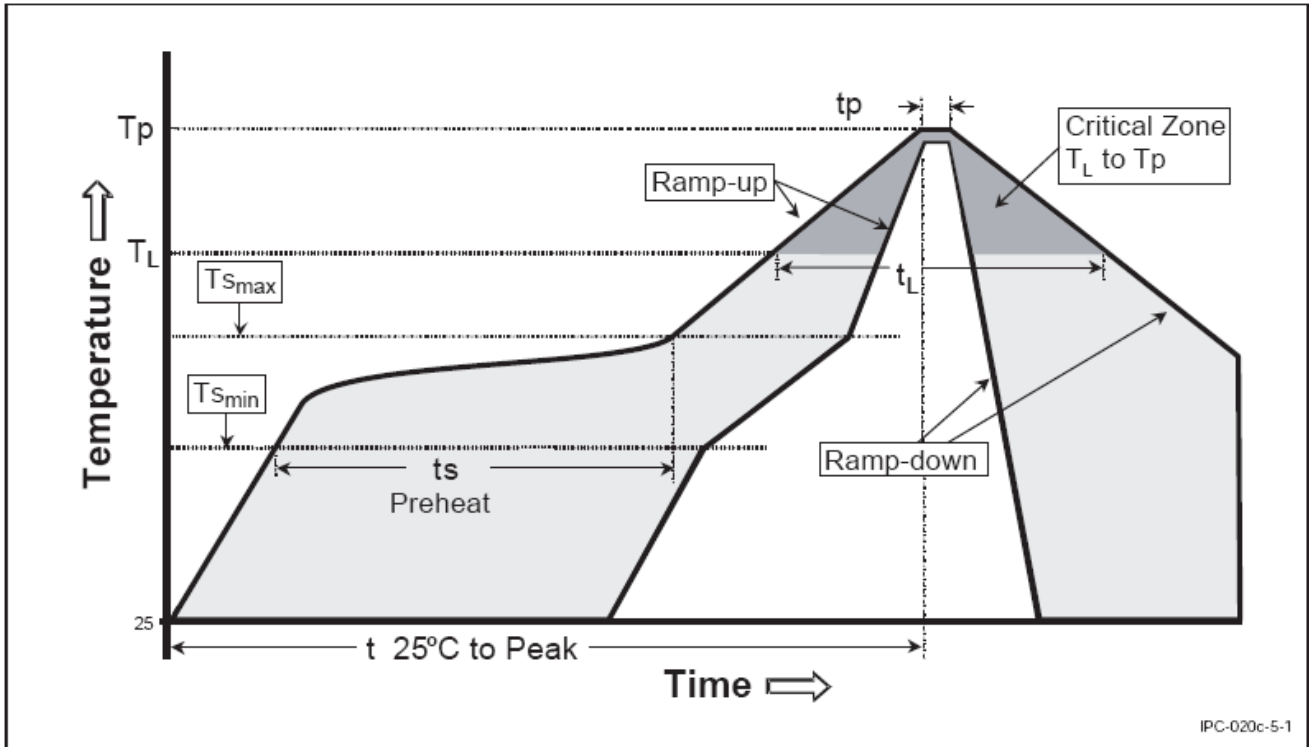
- Mounting place must be as far as possible from the position, which is close to the break line of board, or on the line of large holes of board.
- Do not bend extremely the board, in mounting another component.
If necessary, use back-up pin (support pin) to prevent from bending extremely.
- Do not break the board by hand. We recommend using the machine or the jig to break it.

7.3 Precaution for Soldering

Note that rapid heating, rapid cooling or local heating will easily damage this product. Do not give heat shock over 100°C in the process of soldering. We recommend taking preheating and gradual cooling.

7.4 Recommendable Reflow Soldering

Profile Feature	Pb-Free Assembly
Average Ramp-Up Rate (T _{smax} to T _p)	3° C/second max.
Preheat – Temperature Min (T _{smin}) – Temperature Max (T _{smax}) – Time (t _{smin} to t _{smax})	150 °C 200 °C 60-180 seconds
Time maintained above: – Temperature (T _L) – Time (t _L)	217 °C 60-150 seconds
Peak/Classification Temperature (T _p)	260 °C
Time within 5 °C of actual Peak Temperature (t _p)	20-40 seconds
Ramp-Down Rate	6 °C/second max.
Time 25 °C to Peak Temperature	8 minutes max.



*According to J-STD-020C

7.5 Soldering Gun Procedure

Note the follows, in case of using soldering gun for replacement.

- (1) The tip temperature must be less than 280°C for the period within 3 seconds by using soldering gun less than 30 W.
- (2) The soldering gun tip shall not touch this product directly.

7.6 Soldering Volume

Note that excess of soldering volume will easily get crack the body of this product.