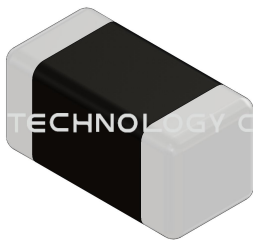


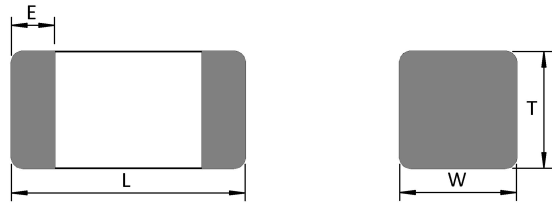
MIP1608PR47MBP



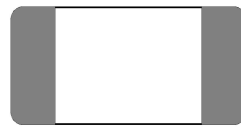
Appearance & Shape



INPAQ TECHNOLOGY CO., LTD.



INPAQ TECHNOLOGY CO., LTD.



L	1.60±0.15
W	0.80±0.15
T	0.80±0.15
E	0.30±0.20

(unit:mm)



注意 NOTICE: All Specifications are subject to change without notice.

Page 1/4

1. 本文件由 INPAQ 佳邦科技網站下載，若規格變更及停產，請於訂購時確認，恕不另行通知。
2. 本文件僅說明參考標準規格，如需訂購，請依實際核准所需規格進行申辦。

Specification

L size(mm)	1.60±0.15
W size(mm)	0.80±0.15
T size(mm)	0.80±0.15
Size code Inch(mm)	0603(1608)
Inductance(uH)	0.47
Tolerance(%)	±20
Test Frequency(MHz)	1
DCR(Ω)	0.1
Tolerance(%)	±25
SRF(MHz)Min.	70
Irms(mA)Max.	1200
Operating Temperature range(including self-temperature rising) °C	-40~+85

注意 NOTICE: All Specifications are subject to change without notice.

Page 2/4

1. 本文件由 INPAQ 佳邦科技網站下載，若規格變更及停產，請於訂購時確認，恕不另行通知。
2. 本文件僅說明參考標準規格，如需訂購，請依實際核准所需規格進行申辦。

Notices

- The monolithic construction performs high reliability and ensures a closed magnetic flux in a component avoids magnetic leakage and interference .
- Allow for higher mounting density.
- Low DC resistance.

Packing

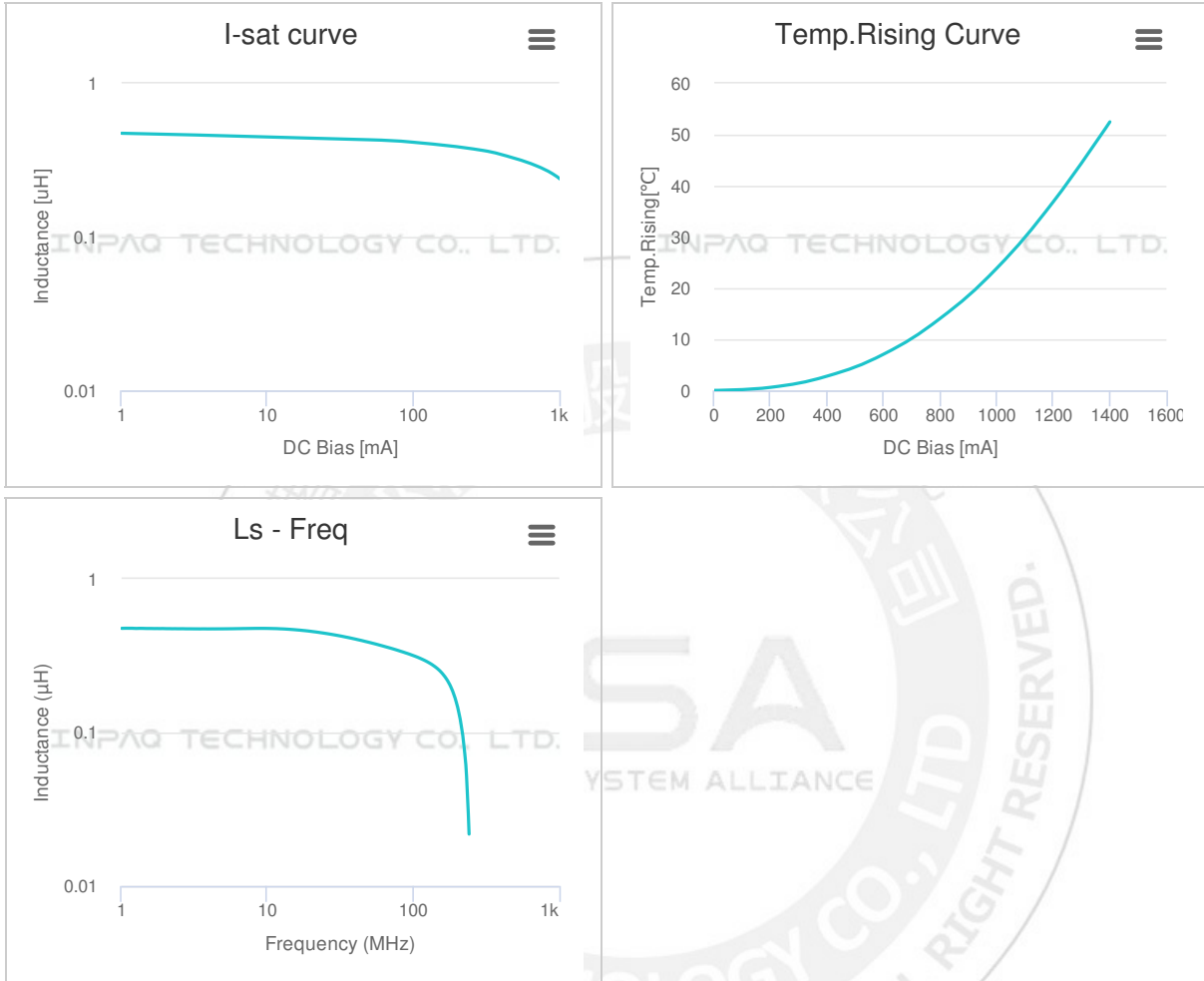
Packing Reel(Inch)	Packaging type	Standard package quantity(PCS)	Piece weight(gram)	MSL Level
7	Paper type	4000	0.0048	1

注意 NOTICE: All Specifications are subject to change without notice.

Page 3/4

1. 本文件由 INPAQ 佳邦科技網站下載，若規格變更及停產，請於訂購時確認，恕不另行通知。
2. 本文件僅說明參考標準規格，如需訂購，請依實際核准所需規格進行申辦。

Characteristic curve



注意 NOTICE: All Specifications are subject to change without notice.

Page 4/4

1. 本文件由 INPAQ 佳邦科技網站下載，若規格變更及停產，請於訂購時確認，恕不另行通知。
2. 本文件僅說明參考標準規格，如需訂購，請依實際核准所需規格進行申辦。