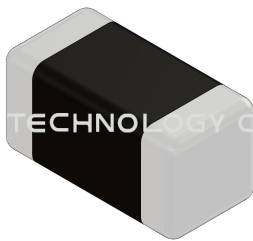


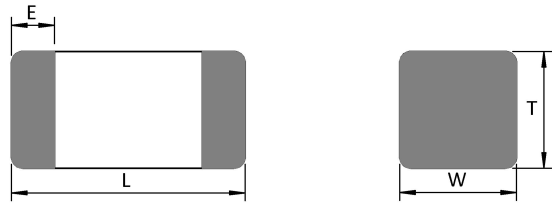
MIP1608PR24MBP



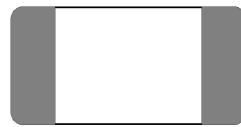
Appearance & Shape



INPAQ TECHNOLOGY CO., LTD.



INPAQ TECHNOLOGY CO., LTD.



| | |
|---|-----------|
| L | 1.60±0.15 |
| W | 0.80±0.15 |
| T | 0.80±0.15 |
| E | 0.30±0.20 |

(unit:mm)



注意 NOTICE: All Specifications are subject to change without notice.

Page 1/4

1. 本文件由 INPAQ 佳邦科技網站下載，若規格變更及停產，請於訂購時確認，恕不另行通知。
2. 本文件僅說明參考標準規格，如需訂購，請依實際核准所需規格進行申辦。

Specification

| | |
|---|------------|
| L size(mm) | 1.60±0.15 |
| W size(mm) | 0.80±0.15 |
| T size(mm) | 0.80±0.15 |
| Size code Inch(mm) | 0603(1608) |
| Inductance(uH) | 0.24 |
| Tolerance(%) | ±20 |
| Test Frequency(MHz) | 1 |
| DCR(Ω) | 0.1 |
| Tolerance(%) | ±25 |
| SRF(MHz)Min. | 90 |
| Irms(mA)Max. | 1200 |
| Operating Temperature range(including self-temperature rising) °C | -40~+85 |

注意 NOTICE: All Specifications are subject to change without notice.

Page 2/4

1. 本文件由 INPAQ 佳邦科技網站下載，若規格變更及停產，請於訂購時確認，恕不另行通知。
2. 本文件僅說明參考標準規格，如需訂購，請依實際核准所需規格進行申辦。

Notices

- The monolithic construction performs high reliability and ensures a closed magnetic flux in a component avoids magnetic leakage and interference .
- Allow for higher mounting density.
- Low DC resistance.

Packing

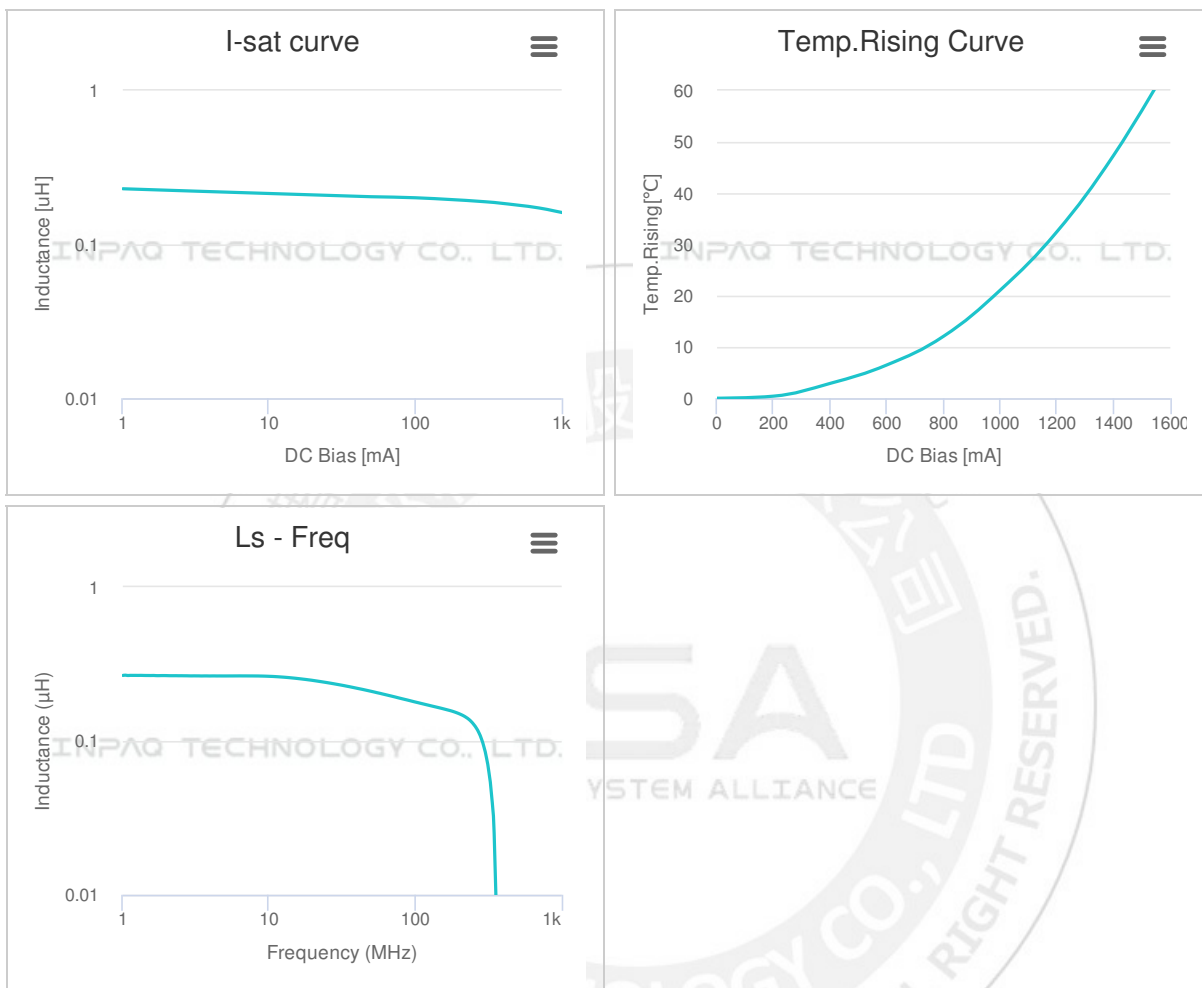
| Packing Reel(Inch) | Packaging type | Standard package quantity(PCS) | Piece weight(gram) | MSL Level |
|--------------------|----------------|--------------------------------|--------------------|-----------|
| 7 | Paper type | 4000 | 0.0048 | 1 |

注意 NOTICE: All Specifications are subject to change without notice.

Page 3/4

1. 本文件由 INPAQ 佳邦科技網站下載，若規格變更及停產，請於訂購時確認，恕不另行通知。
2. 本文件僅說明參考標準規格，如需訂購，請依實際核准所需規格進行申辦。

Characteristic curve



注意 NOTICE: All Specifications are subject to change without notice.

Page 4/4

1. 本文件由 INPAQ 佳邦科技網站下載，若規格變更及停產，請於訂購時確認，恕不另行通知。
2. 本文件僅說明參考標準規格，如需訂購，請依實際核准所需規格進行申辦。