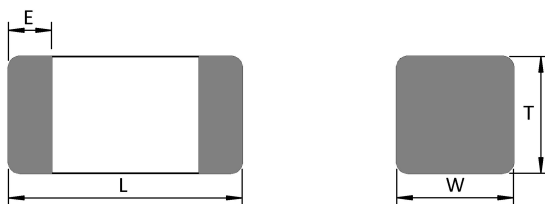
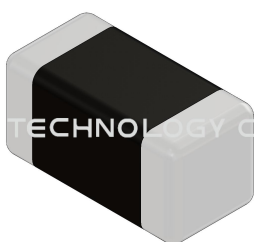


# MCB1608S221JZP



## Appearance & Shape



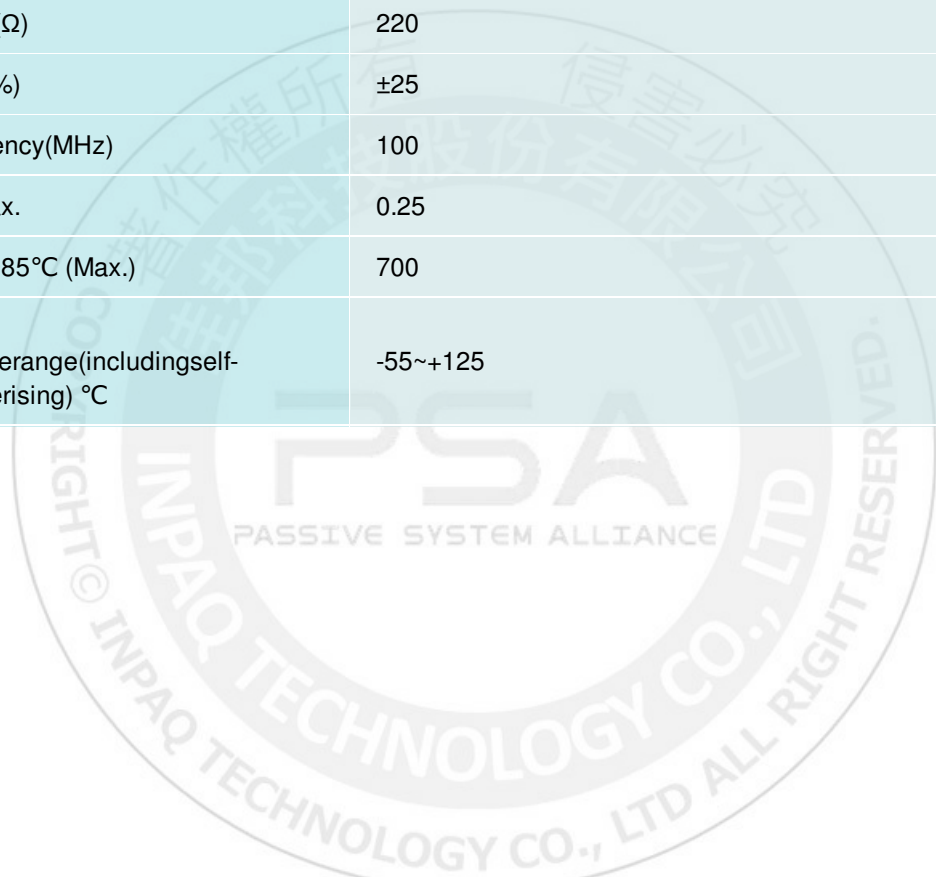
L	1.60±0.15
W	0.80±0.15
T	0.80±0.15
E	0.30±0.20

(unit:mm)

注意 NOTICE: All Specifications are subject to change without notice.  
1. 本文件由 INPAQ 佳邦科技網站下載，若規格變更及停產，請於訂購時確認，恕不另行通知。  
2. 本文件僅說明參考標準規格，如需訂購，請依實際核准所需規格進行申辦。

## Specification

L size(mm)	1.6±0.15
W size(mm)	0.8±0.15
T size(mm)	0.8±0.15
Size code Inch(mm)	0603(1608)
Impedance(Ω)	220
Tolerance(%)	±25
Test Frequency(MHz)	100
DCR(Ω) Max.	0.25
Irms(mA) @85°C (Max.)	700
Operating Temperature range(including self-temperature rising) °C	-55~+125



注意 NOTICE: All Specifications are subject to change without notice.

Page 2/4

1. 本文件由 INPAQ 佳邦科技網站下載，若規格變更及停產，請於訂購時確認，恕不另行通知。
2. 本文件僅說明參考標準規格，如需訂購，請依實際核准所需規格進行申辦。

## Notices

- Monolithic inorganic material construction
- Closed magnetic circuit avoids crosstalk
- SMD Type & suitable for reflow and wave soldering
- Available in various sizes
- Excellent solderability and heat resistance
- High reliability
- Effectively filtering capability over a wide range of frequency
- Compliant with AEC Q200

## Packing

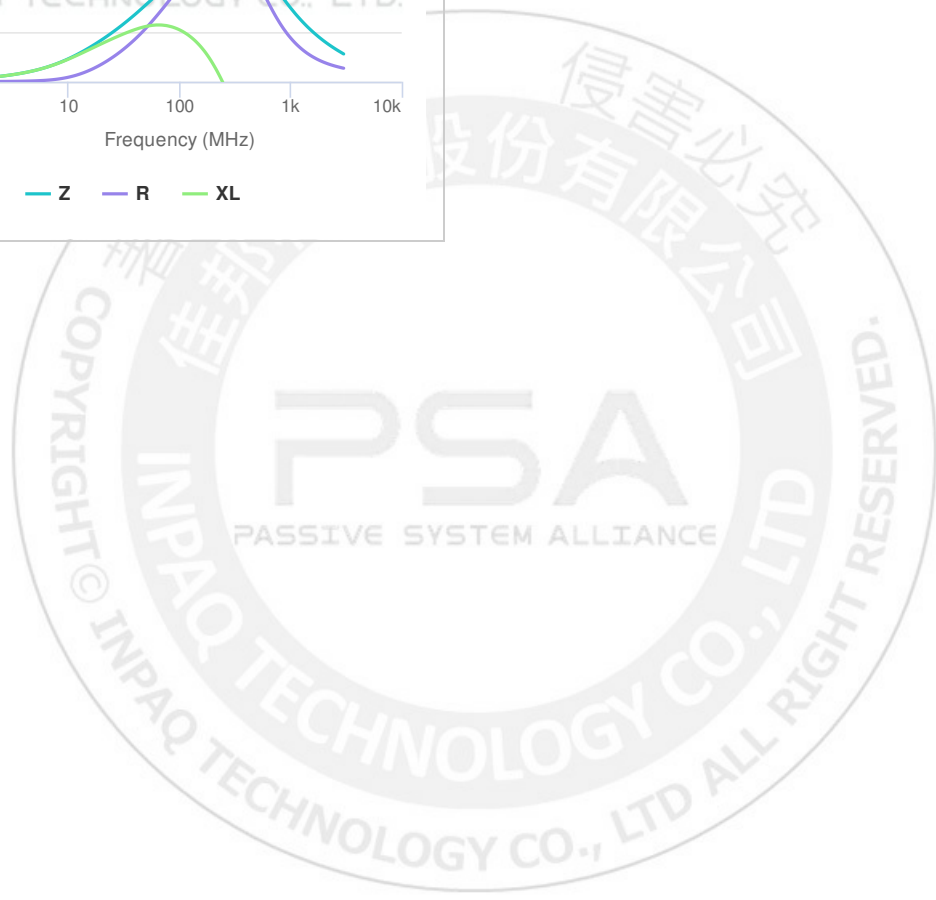
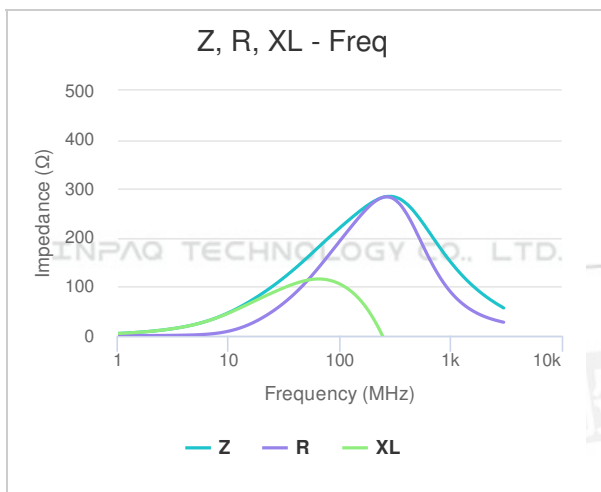
Packing Reel(Inch)	Packaging type	Standard package quantity(PCS)	Piece weight(gram)	MSL Level
7	Paper type	4000	0.005	1

注意 NOTICE: All Specifications are subject to change without notice.

Page 3/4

1. 本文件由 INPAQ 佳邦科技網站下載，若規格變更及停產，請於訂購時確認，恕不另行通知。
2. 本文件僅說明參考標準規格，如需訂購，請依實際核准所需規格進行申辦。

## Characteristic curve



注意 NOTICE: All Specifications are subject to change without notice.

Page 4/4

1. 本文件由 INPAQ 佳邦科技網站下載，若規格變更及停產，請於訂購時確認，恕不另行通知。
2. 本文件僅說明參考標準規格，如需訂購，請依實際核准所需規格進行申辦。