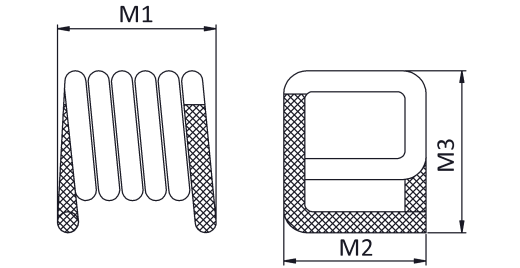
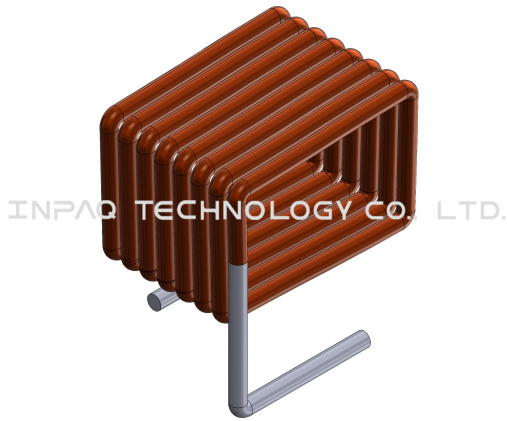


LQA2222AR27_



Appearance & Shape



INPAQ TECHNOLOGY CO., LTD. INPAQ TECHNOLOGY CO., LTD. Unit:mm

Series	M1	M2	M3
LQA2222A90N□	5.21±0.381	5.46±0.254	5.69±0.254
LQA2222AR11□	6.35±0.381	5.59±0.254	5.69±0.254
LQA2222AR13□	6.73±0.381	5.59±0.254	5.69±0.254
LQA2222AR16□	7.37±0.381	5.59±0.254	5.69±0.254
LQA2222AR18□	8.13±0.381	5.59±0.254	5.69±0.254
LQA2222AR22□	9.91±0.381	5.59±0.254	5.69±0.254
LQA2222AR27□	11.68±0.381	5.59±0.254	5.69±0.254
LQA2222AR30□	11.94±0.381	5.72±0.254	5.69±0.254

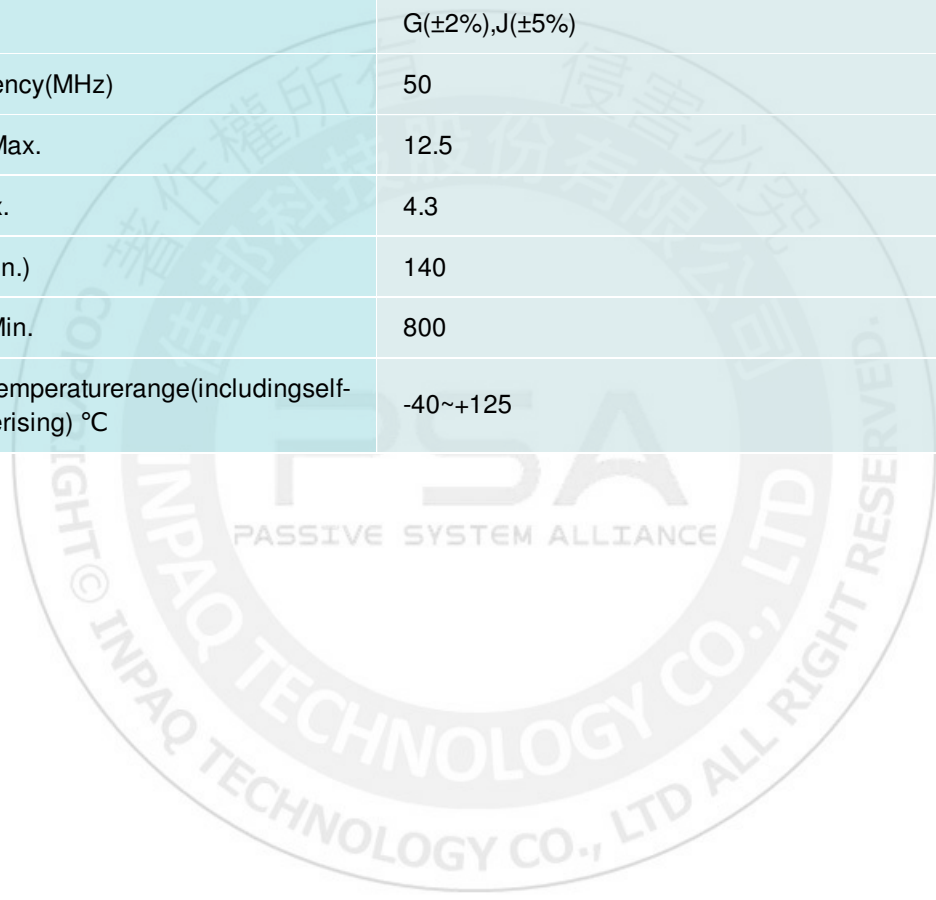


注意 NOTICE: All Specifications are subject to change without notice.

1. 本文件由 INPAQ 佳邦科技網站下載，若規格變更及停產，請於訂購時確認，恕不另行通知。
2. 本文件僅說明參考標準規格，如需訂購，請依實際核准所需規格進行申辦。

Specification

L size(mm)	11.68±0.381
W size(mm)	5.46±0.254
T size(mm)	5.69±0.254
Inductance(nH)	270
Tolerance	G(±2%),J(±5%)
Test Frequency(MHz)	50
DCR(mΩ) Max.	12.5
I _{rms} (A) Max.	4.3
Q Value (Min.)	140
SRF[MHz]Min.	800
Operating Temperature range (including self-temperature rising) °C	-40~+125



注意 NOTICE: All Specifications are subject to change without notice.

Page 2/3

1. 本文件由 INPAQ 佳邦科技網站下載，若規格變更及停產，請於訂購時確認，恕不另行通知。
2. 本文件僅說明參考標準規格，如需訂購，請依實際核准所需規格進行申辦。

Notices

- 1.1. Exceptionally high Q.
- 1.2. Handles up to 5.7 Amps current.
- 1.3. Flat top and bottom for reliable pick and place and mechanical stability.
- 1.4. Solder coated leads ensure excellent solderability.
- 1.5. High reliability tests comply with AEC-Q200.

Packing

Packing Reel(Inch)	Carrier Tape	Standard package quantity(KPCS)	Piece weight(gram)	MSL Level
13	Plastic type	0.75	0.066	1

注意 NOTICE: All Specifications are subject to change without notice.

Page 3/3

- 1. 本文件由 INPAQ 佳邦科技網站下載，若規格變更及停產，請於訂購時確認，恕不另行通知。
- 2. 本文件僅說明參考標準規格，如需訂購，請依實際核准所需規格進行申辦。